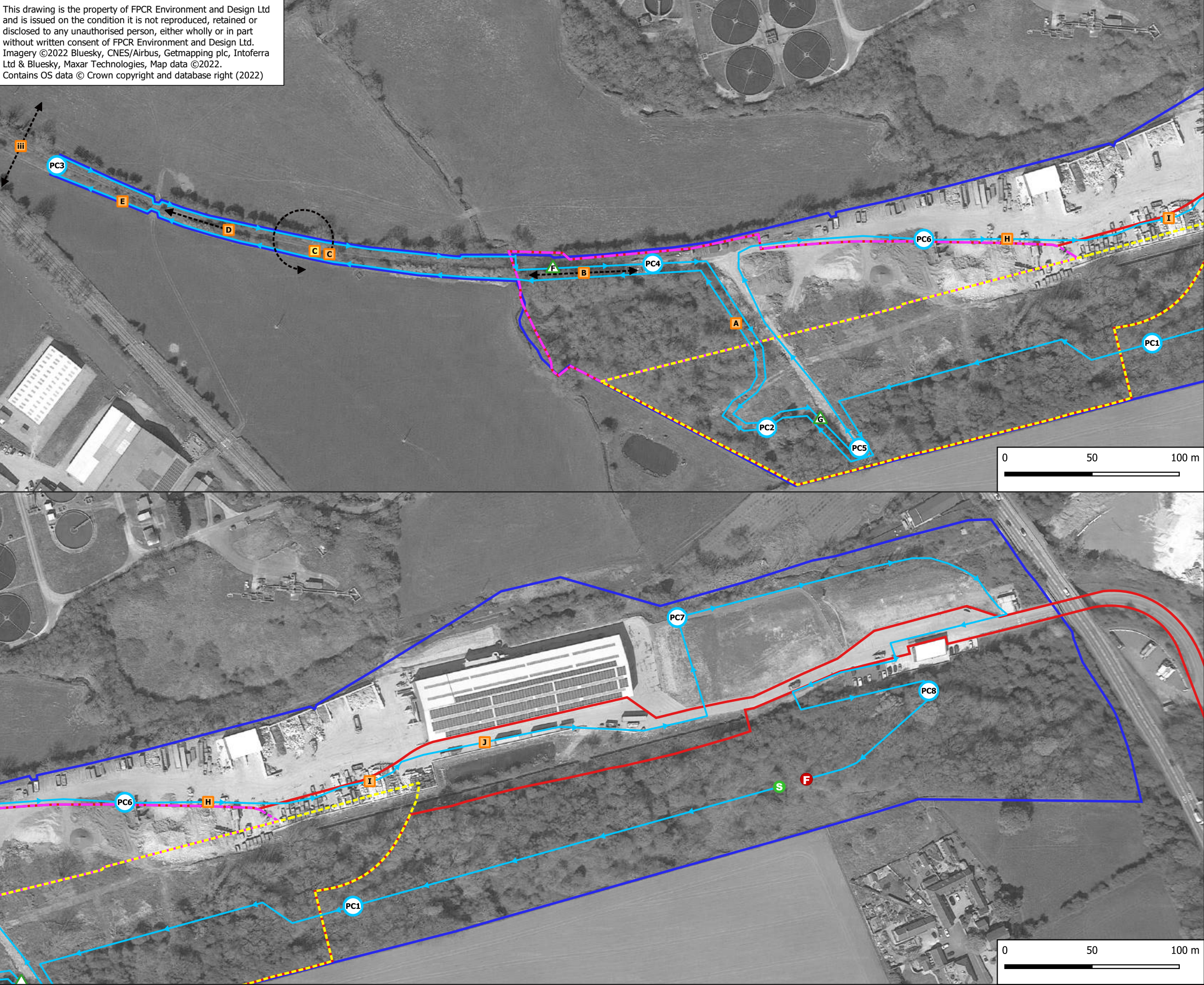


This drawing is the property of FPCR Environment and Design Ltd and is issued on the condition it is not reproduced, retained or disclosed to any unauthorised person, either wholly or in part without written consent of FPCR Environment and Design Ltd. Imagery ©2022 Bluesky, CNES/Airbus, Getmapping plc, Intoferra Ltd & Bluesky, Maxar Technologies, Map data ©2022. Contains OS data © Crown copyright and database right (2022)



Key

- SRRP Planning Application Red Line Boundary
- Ecology Survey Area
- Aggregate Recovery Facility (ARF) Boundary
- Energy Recovery Facility (ERF) Boundary
- Start point
- Start Point
- Point Count Location (with reference)
- Transect Route
- Bat Contact (with reference*)
- Common Pipistrelle
- Soprano Pipistrelle
- Myotis Species
- Flight Path

Date	19/05/2021
Start Time	21:03
End Time	23:03
Sunset	21:03
Start Temp	10C
End Temp	9C
Cloud Cover	5%
Wind	1
Rain	0

Ref.	Time	Species	Behaviour	Passes	Comments
PC1	21:12 - 21:17	No Bats			
PC2	21:26 - 21:31				
i	21:31	C.pip	Foraging	1	NV
A	21:35	C.pip	Foraging	3	NV
B	21:38	C.pip	Foraging	4	
C	21:43	C.pip x 2	Foraging	Constant	
D	21:48	C.pip	Foraging	4	
E	21:53	C.pip	Foraging	1	
PC3	21:55 - 22:00				
ii	21:55	C.pip	Foraging	2	NV
iii	21:57	C.pip	Foraging	4	
E	22:02	C.pip	Foraging	2	
D	22:05	C.pip	Foraging	1	
C	22:09	C.pip; S.pip	Foraging	2	
B	22:10	C.pip	Foraging	1	
F	22:10	Myotis sp.	Pass	1	
PC4	22:13 - 22:18				
iv	22:13	C.pip; Myotis sp.	Foraging; Social Calls	Constant	
v	22:17	S.pip	1	Pass	NV
A	22:19	C.pip	Foraging	Multiple	NV
G	22:21	Myotis sp.	Foraging	2	NV
PC5	22:23 - 22:28				
vi	22:23	C.pip	Foraging	Constant	NV
PC6	22:31 - 22:36				
vii	21:31	C.pip; S.pip	Foraging	Constant	NV
H	22:31	C.pip	Foraging	2	NV
I	22:39	C.pip	Pass	1	NV
J	22:41	C.pip	Foraging	1	NV
PC7	22:43 - 22:48				
viii	22:46	C.pip	Pass	1	NV
PC8	22:53 - 22:58	No Bats			

* Lower case numerals denote bat contact within point count

A	29.09.22	Minor amendments	NJL/NJL
-	21.02.22	Initial draft	LG/NJL
rev	date	comment	drm/chk

client
R&P Clean Power Limited

project
Swadlincote Resource Recovery Park (SRRP)

drawing title
BAT TRANSECT SURVEY - MAY 2021

drawing / figure number
7233-ES-8.5-02

Date printed
29/9/2022